

Join Us for Next Week's Customer Roundtable | Lessons from your Peers

Wednesday, March 26, 2 PM EST

Featured guests:

Angela Salamy, CBEP, Director, Training & Development, Workforce Services, Tennessee Department of Labor & Workforce Development

John Maruri, Business & Community Relations Specialist, San Diego Workforce Partnership

Mark Muckerman, CRO & Director of Strategy for EconoVue as Moderator

Date: Wednesday, March 26

Time: 2:00 pm ET / 1:00 pm CT / 11:00 am PT

REGISTER NOW

Product Vue | Recruitment Outreach to Hiring Employers

Workforce development professionals can identify stable and growing companies in your county in seconds for a quarterly job fair or large scale hiring event.

For example, Business Services teams in Broward County, FL can quickly narrow their outreach efforts from the **4,140 manufacturers** in the county to the **291 stable and growing companies with 10 employees** most likely in need of an expanded workforce.

Using ProspectVue, start a search with these filters and adjust for your program:

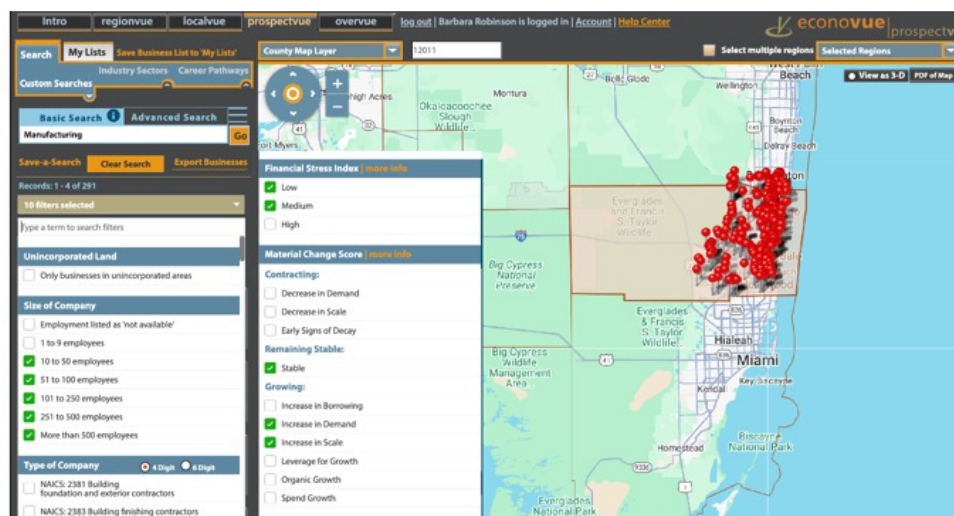
Area: County

Industry: Manufacturing

Company Size: >10 Employees

Financial Stress Score: Low Risk + Medium Risk of Business Failure

Material Change Score: Stable + Increase in Demand + Increase in Demand



Use Case Vue | Work Share Program | Geo-Proximity Business Outreach

EconoVue recently published two interesting use cases.

In the **Work Share Program** use case, a workforce board wanted to directly contact at-risk small and medium-sized employers to increase awareness of and participation in the State's work share program to mitigate layoff risk.

In the **Geo-Proximity Business Outreach** use case, a CareerOneStop adopted a data-driven approach to enable geo-targeting businesses with job openings in order to improve its job seeker/business placements and retention goals.

Identifying At-Risk
Businesses for Work Share
Program to Avert Layoffs



Geo-Proximity Business
Outreach Facilitates
Job Placements



Follow us on [LinkedIn](#) for the latest use cases. [Check out all use cases.](#)

Vue Points

- > Workforce Central Business Engagement Case Study > [READ NOW](#)
- > AAWDC Apprenticeship Program Case Study > [READ NOW](#)
- > November 2024 Customer Roundtable: WorkSource Montgomery, MD + WorkSource Middle Georgia > [LISTEN NOW](#)
- > June 2024 Customer Roundtable: RichmondWorks, CA and CareerSource Capital Region, FL > [LISTEN NOW](#)

Training Vue

Sign up for the EconoVue Skills Series

Register today for our monthly series of 30-minute coaching sessions – each designed to meet a key Workforce data need with a specific set of EconoVue skills and Practices.

The live, online sessions follow three core Workforce tracks:

- Business Outreach
- Research and Planning
- Occupations and Career Pathways

Pick and choose the classes that will impact your work the most – or join us for the entire series! Come back each month to try a new class or revisit a topic for current examples and ideas.

Visit our new Express Sign Up page to register for multiple classes at once!

EXPRESS SIGN UP



TUTORIALS: [Getting Started](#) | [ProspectVue](#) | [RegionVue](#) | [LocalVue](#) | [OverVue](#)



LIVE SESSIONS: A series of eight 30-minute coaching sessions – [Sign up now](#)



FOLLOW US: [LinkedIn](#)