

Customer Roundtable | Lessons from your Peers

Join Us: [Wednesday, March 26, 2 PM EST](#)

In this virtual interactive session, you will have the opportunity to learn from and engage with fellow workforce development professionals. Your peers will share their workforce use cases – the situation, need, challenges, results, and lessons learned. Featured guests include:

Angela Salamy, CBEP, Director, Training & Development, Workforce Services, Tennessee Department of Labor & Workforce Development

John Maruri, Business & Community Relations Specialist, San Diego Workforce Partnership

Mark Muckerman, CRO & Director of Strategy for EconoVue as Moderator

Date: Wednesday, March 26

Time: 2:00 pm ET / 1:00 pm CT / 11:00 am PT

[REGISTER NOW](#)

HOW TO Guides | Now Available in the [Help Center](#)

Product Enhancement | [Job Posting Activity Stats and Employer Rating Filters](#)

EconoVue is pleased to announce a product enhancement in ProspectVue featuring a new data resource for job posting activity stats and employer ratings - made possible through our partnership with [Public Insight](#). Public Insight offers a detailed lens into the hiring landscape of any region.

Job Posting Activity

This filter shows companies that have posted job positions on Indeed.com or Glassdoor in the past 12 months. This can be used as a proxy to identify companies with robust hiring activity. This filter, combined with D&B growth filters (e.g. 'increasing in scale'), with apprenticeship filters or searches like the Career Pathways or Industry Sectors, helps you create a more targeted business outreach.

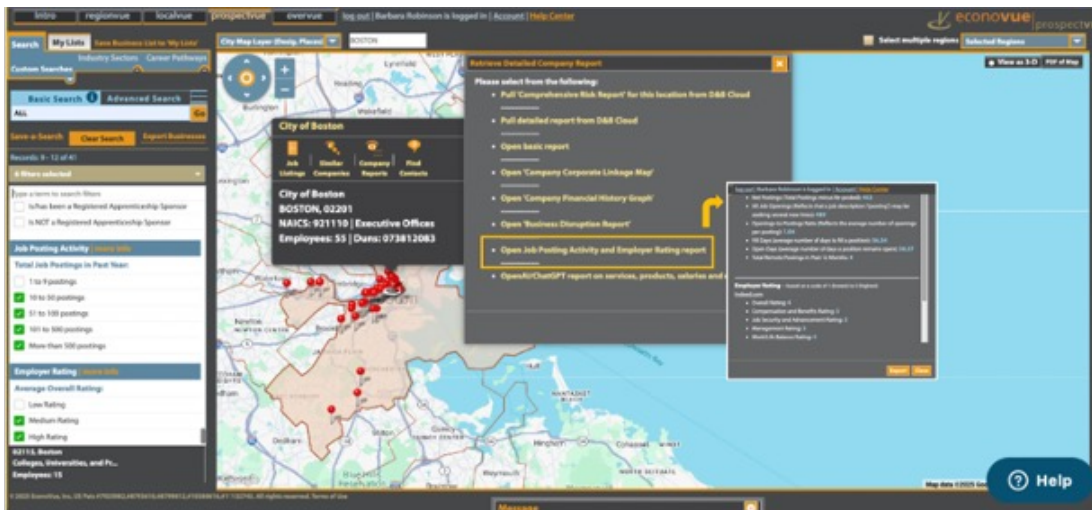
Employer Ratings

This filter captures employer ratings posted on Glassdoor in the prior 12 months by employees working at companies. These ratings allow career counselors or potential job seekers to gauge the overall employment experience at a company. The scale uses a '1-5 Star' rating system reflecting feedback in multiple dimensions, with 1 being the lowest rating. This data can be used as a proxy to capture a 'company culture' of active employers.

Employer Rating data from Public Insight is refreshed quarterly in EconoVue.

To access, go to ProspectVue's filter menu, scroll to the bottom to see Job Posting Activity and Employer Ratings, select the desired sub filters, once map is populated, select a company pin on map, click on Company Reports, select Job Posting Activity & Employer Rating Report for detailed information.

See image on next page >



Vue Points

- > AAWDC Apprenticeship Program Case Study > [READ NOW](#)
- > November 2024 Customer Roundtable: WorkSource Montgomery, MD + WorkSource Middle Georgia > [LISTEN NOW](#)
- > Most Read Case Studies of 2024 > [READ NOW](#)
- > Most Read Use Cases of 2024 > [READ NOW](#)

Training Vue

Sign up for the EconoVue Skills Series

Register today for our monthly series of 30-minute coaching sessions – each designed to meet a key Workforce data need with a specific set of EconoVue skills and Practices.

The live, online sessions follow three core Workforce tracks:

- Business Outreach
- Research and Planning
- Occupations and Career Pathways

Pick and choose the classes that will impact your work the most – or join us for the entire series! Come back each month to try a new class or revisit a topic for current examples and ideas.

Visit our new Express Sign Up page to register for multiple classes at once!

[EXPRESS SIGN UP](#)



TUTORIALS: [Getting Started](#) | [ProspectVue](#) | [RegionVue](#) | [LocalVue](#) | [OverVue](#)



LIVE SESSIONS: A series of eight 30-minute coaching sessions – [Sign up now](#)



FOLLOW US: [LinkedIn](#)