

DECEMBER 2024



November Roundtable Recap: [Lessons from your Peers](#)

In case you missed last month's roundtable, you can listen to fascinating use cases, insights, and lessons learned shared by your peers. Jocelyn Park from WorkSource Montgomery in Maryland shared its progress on business recruitment for their innovative "Worlds of Work" career program where each "world" is a sector highlighting the world of opportunities for 2,000 middle school students. Paul Allen from WorkSource Middle Georgia shared how EconoVue accelerates numerous workforce programs such as upskilling existing employees, hiring new employees, job profiling and testing using the ACT WorkKeys program, and registered apprenticeships.

[Listen now](#) to this most informative roundtable..

DOWNLOAD NOW

2024 - A Year in Review

As we close out 2024, it is time to celebrate all our customers, their success stories, and memorable workforce programs that shaped the past 12 months. A special thanks go to this year's roundtable speakers - John Zuknick, Christian Reed, Emmanuel Njome, Reenee Williams-Walter, Jocelyn Park, and Paul Allen - who so willingly shared their programs, goals, challenges, successes, and lessons learned.

Now, let's look back at the most read case studies and use cases of 2024, which showcase your impact in your local communities.

Customer Vue | [Most Read Case Studies of 2024](#)

1. SELACO Sector Strategies Success Story > [READ NOW](#)
2. Workforce Central Success Story > [READ NOW](#)
3. Anne Arundel County Bridge Collapse Success Story > [READ NOW](#)
4. CareerSource Capital Region Success Story > [READ NOW](#)
5. California County Business Engagement Success Story > [READ NOW](#)

Follow us on [LinkedIn](#) for latest case studies. [Check out](#) all case studies.

Use Case Vue | [Most Read Use Cases of 2024](#)

1. Local Area Plans > [READ NOW](#)
2. Layoff Aversion > [READ NOW](#)
3. Apprenticeships > [READ NOW](#)
4. Reentry > [READ NOW](#)
5. Disaster Recovery > [READ NOW](#)

Follow us on [LinkedIn](#) for latest use cases. [Check out](#) all use cases.

Product Vue | Most Asked Question

How do you find businesses willing to hire justice-involved individuals?

Workforce development professionals can use the powerful filtering capabilities in EconoVue to pinpoint Fair Chance or Second Chance employers who are likely growing and hiring within an industry or location in seconds to explore employment opportunities for justice-involved job seekers. Here's how to do it:

Using LocalVue: Click on the Jobs Tab:

Select Location: City or ZIP code

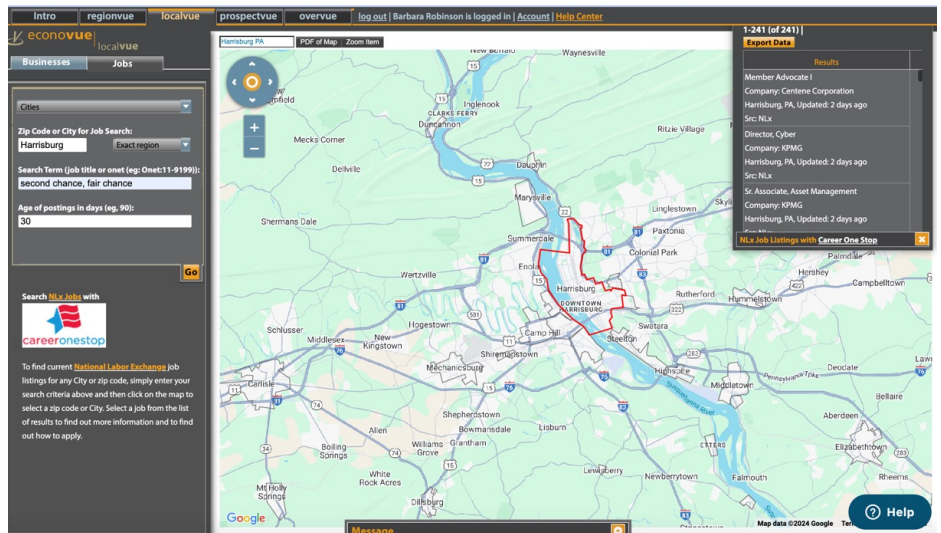
Select Desired Radius: Exact region, 25, 50, 100-mile radius

Enter Search Term: "Fair Chance" or "Second Chance"

Enter Age of Job Listings: 10, 30, 60, or 90 days

Export List in upper right hand corner

For example, Business Services teams in Harrisburg, PA, can significantly narrow their outreach to **24 city businesses with 241 active job listings** that are open to hire job candidates looking for a second chance.



Training Vue

Sign up for the EconoVue Skills Series

Register today for our monthly series of 30-minute coaching sessions – each designed to meet a key Workforce data need with a specific set of EconoVue skills and Practices.

The live, online sessions follow three core Workforce tracks:

- Business Outreach
- Research and Planning
- Occupations and Career Pathways

Pick and choose the classes that will impact your work the most – or join us for the entire series! Come back each month to try a new class or revisit a topic for current examples and ideas.

Visit our new Express Sign Up page to register for multiple classes at once!

EXPRESS SIGN UP



TUTORIALS: [Getting Started](#) | [ProspectVue](#) | [RegionVue](#) | [LocalVue](#) | [OverVue](#)



LIVE SESSIONS: A series of eight 30-minute coaching sessions – [Sign up now](#)



FOLLOW US: [LinkedIn](#)