

Customer Vue | CareerSource Capital Region Case Study

Targeted Outreach for the Growing Forward Employer Resource Luncheon Builds Awareness, Relationships, and Collaboration

CareerSource Capital Region wanted a more proactive approach to connect qualified, skilled talent and Floridians with employment and career development opportunities to achieve economic prosperity in Gadsden, Jefferson, Leon, and Wakulla counties.

CareerSource Capital Region created an innovative and successful program, the **Growing Forward Employer Resource Luncheon**, to increase business engagement. This case study explores how EconoVue accelerated its initial outreach strategy for the first year and evolved it into a more strategic targeted approach for business engagement in Year 2.

Read about the program, challenges, solution, and success in the full case study.

[READ NOW](#)

Join us for our next **Customer Roundtable**
Thursday, November 21 - 2 PM ET

[REGISTER NOW](#)

Please take our **Annual Customer Survey**
Your Feedback Matters

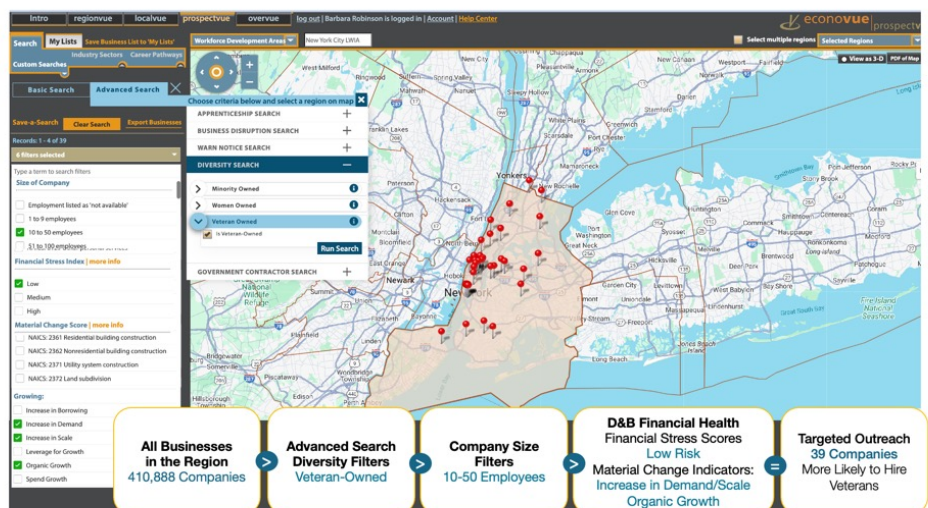
[TAKE OUR SURVEY NOW](#)

Product Vue | Veterans Programs

In November, we thank all veterans for their service. Workforce development professionals work with veteran-owned businesses and veterans seeking employment every day. Using the powerful filtering capabilities in EconoVue, you can identify veteran-owned small businesses in seconds, in order to place veteran job seekers facing significant barriers to employment in their workforce area.

Start your search in ProspectVue, go to **Advanced Search**, then filter by **Diversity Search**, and click on **Veteran-Owned**. Next, filter companies with 10-50 employees with low Financial Stress and Material Change indicators of increase in demand, increase in scale, and organic growth

Business Services teams in the New York LWIA can narrow their veteran-owned business outreach efforts from all businesses in the workforce region to the **590 veteran-owned companies**, to the **39 veteran-owned small businesses** most likely to hire fellow veterans.



Use Case Vue | [Layoff Aversion](#) | [Pre-Apprenticeships](#)

This month, we feature new use cases for two workforce programs: [Layoff Aversion](#) and [Pre-Apprenticeships](#).

One Workforce Board (WDB) took a more proactive business engagement to avert layoffs. Another WDB recruited the most qualified specialty employers for a pre-apprenticeship program.

Follow us on [LinkedIn](#) for new use cases weekly. Check out all [use cases](#).



Vue Points

- > Case Study: Anne Arundel County Bridge Collapse Success Story > [READ NOW](#)
- > Case Study: Workforce Central Success Story > [READ NOW](#)
- > Case Study: SELACO Sector Strategies Success Story > [READ NOW](#)
- > Case Study: Nevada Veteran Job Placement Success > [READ NOW](#)

Training Vue

Sign up for the EconoVue Skills Series

Register today for our monthly series of 30-minute coaching sessions – each designed to meet a key Workforce data need with a specific set of EconoVue skills and Practices.

The live, online sessions follow three core Workforce tracks:

- Business Outreach
- Research and Planning
- Occupations and Career Pathways

Pick and choose the classes that will impact your work the most – or join us for the entire series! Come back each month to try a new class or revisit a topic for current examples and ideas.

Visit our new Express Sign Up page to register for multiple classes at once!

[EXPRESS SIGN UP](#)

 TUTORIALS: [Getting Started](#) | [ProspectVue](#) | [RegionVue](#) | [LocalVue](#) | [OverVue](#)

 LIVE SESSIONS: A series of eight 30-minute coaching sessions – [Sign up now](#)

 FOLLOW US: [LinkedIn](#)