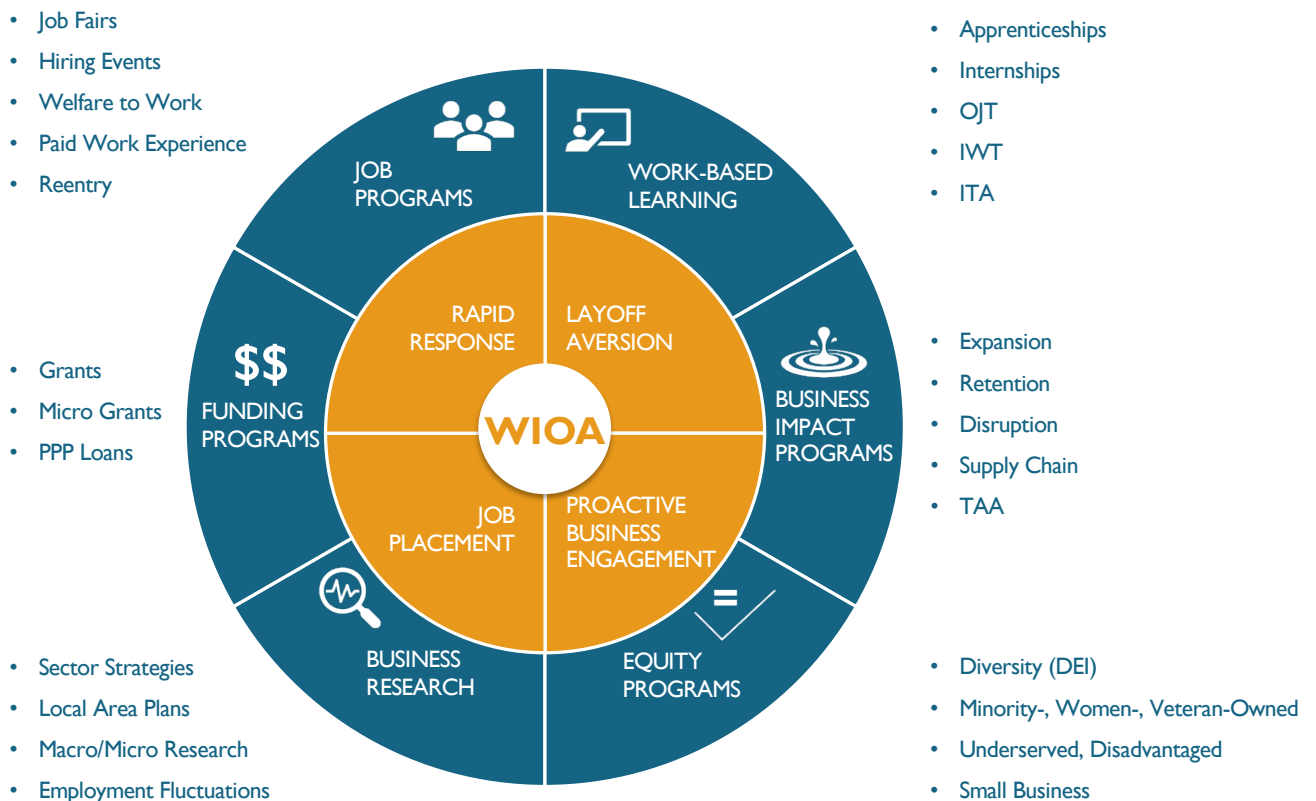




## A Salute to All Workforce Development Professionals

In September, we salute all workforce development professionals, workforce development boards (WDBs), and YOUR Impact on all job seekers, businesses, and communities. Every day, WDBs impact underserved populations, veterans, adult youth, start-ups, struggling small businesses or expanding businesses.

EconoVue is proud to support WDBs with actionable data you need to build effective business outreach for workforce programs such as foundational WIOA initiatives, job seeker assistance and work-based learning programs, business impact and equity programs, business research for sector strategies and LAPs and funding assistance to move businesses forward.



LEARN MORE

# Customer Vue

## Data-driven Employer Outreach Accelerates Program Outcomes

This month, we also highlight the success customers have realized from data-driven outreach strategies in recent case studies and use cases.

**WIOA Programs** Accelerating [proactive business engagement](#), [job placement](#), [rapid response](#), and [layoff aversion](#) efforts is foundational to the WIOA charter.

**Job Programs** Expanding the roster for [local job fairs](#) or [large scale jobs event](#) beyond the usual group of participating employers – and broadening the scope of job opportunities available for a cross-section of job seekers.

**Work-based Learning** Anticipating the industries and occupations that are cycling up and poised for growth, and coordinating with education partners to build [OJT](#) or [IWT](#) training opportunities, and [internship](#) or [apprenticeship](#) programs.

**Business Impact Programs** Enabling WDBs to respond quickly and assist local businesses impacted when a [natural disaster](#) or [man-made disaster](#) happens.

**Equity Programs** Pinpointing minority-, women-, and [veteran-owned businesses](#) to ensure these owners have equitable access to [financial assistance](#) and work-based learning opportunities.

**Business Research** Developing [sector strategies](#) and [LAPs](#) for city and county government officials with robust employer and employment information, financial health changes within business community, overall industry and location trends.

**Funding Programs** Supporting employers with less than 50 employees to gain access to financial assistance needed to grow through [micro-grant programs](#).

---

# Product Vue

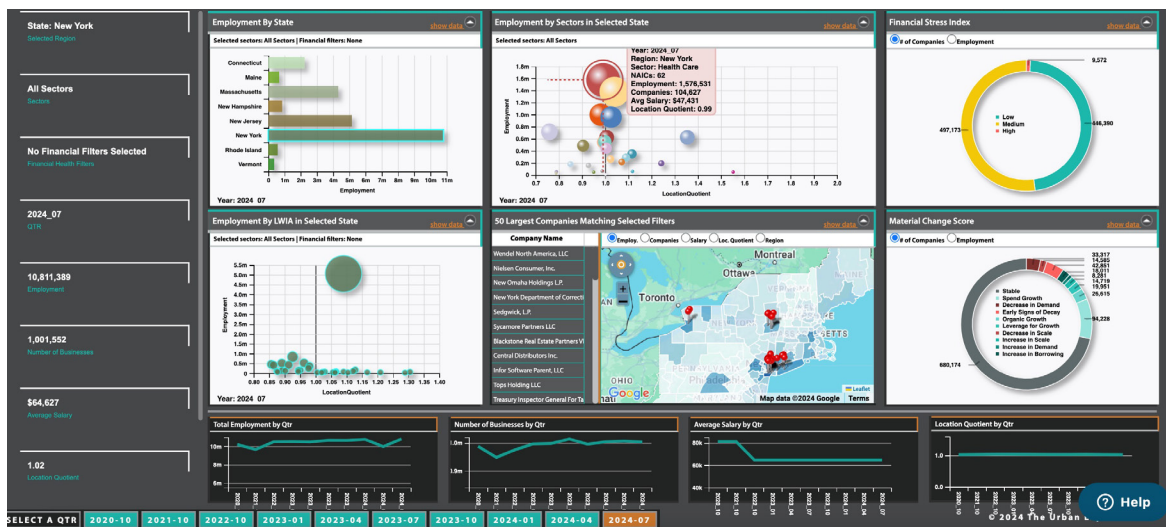
## Employment Fluctuations

Workforce development professionals use OverVue's interactive dashboard to gain instant visibility into employment concentration by State and comparisons by location, industry, level of risk, level of material change, and time series.

As shown in the image below, in the bottom quadrant of the snapshot, local workforce development teams can explore the shifting employment and business dynamics of a region or sector - quarter over quarter. To view a specific sector, click on the bubble in the Employment by Sector box (top middle box) to see employment fluctuations within a sector.

In this example, New York teams can visually see that the employment count in the State has increased over prior quarter while the business count, average salary, and location quotient remain unchanged.

To fully understand all the insights on the OverVue snapshot, download the [Getting Started Guide](#).



## Thank you for your Feedback on our Training

Thank you to all EconoVue users who provided feedback in our most recent survey on our EconoVue Training Series. Respondents' results and highlights are below.

- 93% of respondents were aware of the EconoVue Training Series
- 93% of respondents have attended one or more Knowledge Sessions
- The most popular topics were Business Outreach and Engagement (88%) and Company Research (64%)
- 92% of respondents felt the session length was just right. 8% of respondents felt sessions were too short
- 96% of respondents felt session focus and complexity was just right. 4% felt session contents were too simple
- Top 3 programs for EconoVue use were: Business Outreach (96%), Rapid Response (48%), and Layoff Aversion (44%)

## Training Vue

### Sign up for the EconoVue Skills Series

Register today for our monthly series of 30-minute coaching sessions – each designed to meet a key Workforce data need with a specific set of EconoVue skills and Practices.

The live, online sessions follow three core Workforce tracks:

- Business Outreach
- Research and Planning
- Occupations and Career Pathways

Pick and choose the classes that will impact your work the most – or join us for the entire series! Come back each month to try a new class or revisit a topic for current examples and ideas.

Visit our new Express Sign Up page to register for multiple classes at once!

EXPRESS SIGN UP



TUTORIALS: [Getting Started](#) | [ProspectVue](#) | [RegionVue](#) | [LocalVue](#) | [OverVue](#)



LIVE SESSIONS: A series of eight 30-minute coaching sessions – [Sign up now](#)



FOLLOW US: [LinkedIn](#)