

Customer Vue | WorkForce Central Case Study

WorkForce Central Accelerated Business Engagement and Improved Program Outcomes

WorkForce Central, based in Pierce County, Washington, serves the second-most populous county in the state. As a vital link between job seekers and employers, WorkForce Central recognized the need for a more strategic and data-driven approach to business engagement within its many workforce programs.

- **Recruitment Support:** From Generic to Targeted
- **Work Experience Program:** Streamlining Internships
- **Hosting Hiring Events:** Efficient Targeting
- **Grant-Focused Initiatives:** Identifying Diverse Businesses
- **In-Demand Cohort Development:** Connecting Training to Employment

[READ NOW](#)

This case study explores how EconoVue has transformed WorkForce Central's operations, leading to improved program outcomes and stronger connections between job seekers and employers. Read full case study now.

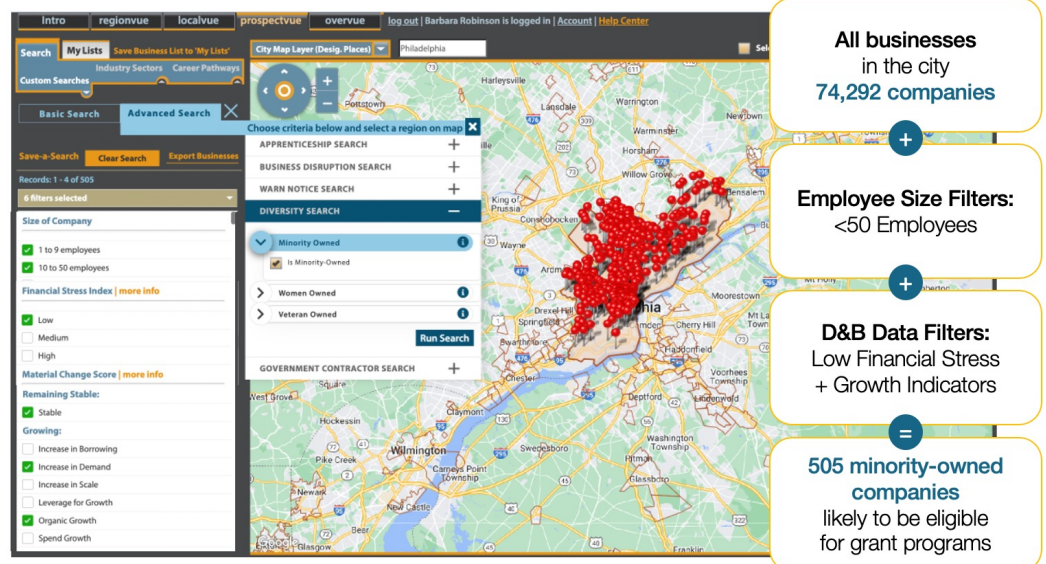
Data Vue | Quarterly Database Update

The EconoVue™ platform was recently refreshed with Dun & Bradstreet data - reflecting the snapshot of businesses as of July 2024.

Product Vue | Special Populations for Grant Programs

Workforce development professionals can use the powerful filtering capabilities in EconoVue to determine the eligibility of minority-owned businesses for grant programs in seconds.

- Start your search in the **Advanced Search** tab
- Click on **Diversity Search**, then select **Minority-owned**, click button
- Click **Run Search** button
- Then filter by company size <50 employees, with low risk of business failure and



For example, Business Services teams in Philadelphia, PA can narrow their minority outreach efforts from the **74,292 companies in the city** to the **505 minority-owned businesses** likely to be eligible for grant programs.

Use Case Vue | Recurring Job Fair Program | Disaster Grant Relief Program

This month, we feature new use cases on two workforce programs: [Recurring Job Fair Program](#) and [Disaster Grant Relief Program](#). One Workforce Board (WDB) took a more strategic approach to business recruitment for recurring job fairs. Another WDB quickly identified eligible small businesses in underserved communities impacted by historic flooding for emergency grant funds.

Follow us on [LinkedIn](#) for new use cases weekly.

A Strategic Approach to Recurring Job Fair Business Recruitment



Grant Relief Program for Communities Impacted by Recent Flooding



Interesting program or story to share? Contact robinson@econovue.com

Vue Points

- > June 2024 Customer Roundtable: RichmondWorks, CA and CareerSource Capital Region, FL > [LISTEN NOW](#)
- > February 2024 Customer Roundtable: Anne Arundel Workforce Development Corporation, MD and Workforce Central, WA > [LISTEN NOW](#)
- > Case Study: Anne Arundel County Bridge Collapse Success Story > [READ NOW](#)
- > Case Study: Proactive Business Engagement Success Story > [READ NOW](#)

Training Vue

Sign up for the EconoVue Skills Series

Register today for our monthly series of 30-minute coaching sessions – each designed to meet a key Workforce data need with a specific set of EconoVue skills and Practices.

The live, online sessions follow three core Workforce tracks:

- Business Outreach
- Research and Planning
- Occupations and Career Pathways

Pick and choose the classes that will impact your work the most – or join us for the entire series! Come back each month to try a new class or revisit a topic for current examples and ideas.

Visit our new Express Sign Up page to register for multiple classes at once!

[EXPRESS SIGN UP](#)



TUTORIALS: [Getting Started](#) | [ProspectVue](#) | [RegionVue](#) | [LocalVue](#) | [OverVue](#)



LIVE SESSIONS: A series of eight 30-minute coaching sessions – [Sign up now](#)



FOLLOW US: [LinkedIn](#)